

FEATURES

- High end aluminum heatsink with a unique elegant design
- Illuxtron patented optical lens system that makes pin-hole light possible
- Anti glare cap that ensures no stray light. The total light opening is only 8mm!

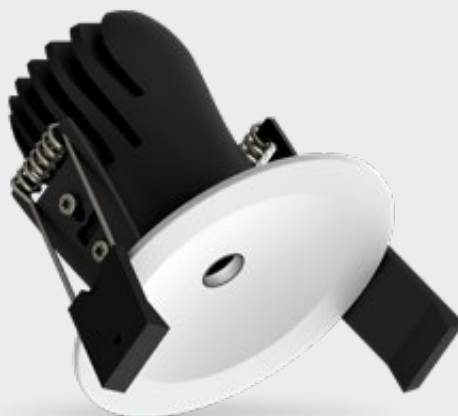
serge cornelissen
architectural lighting
product design

Bartenbach[®]
lighting optics



SPRINGS

Standard with WS springs (gyproc/metal).
Also available as above with CS springs (concrete).



COLOURS

Available colours:



Matt white RAL 9016 (XX=MW)
Matt black RAL 9005 (XX=BL)

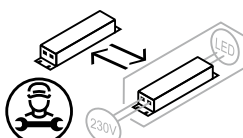
Pointer 68 fix (Gen2)

Fixed

SPECIFICATIONS

Beam angle (FWHM)	35° (45° FWTM) / 60° (80° FWTM)
Fixture material	Housing: Die cast aluminium
Environment	Indoor
IK rate	IK10
Operating temperature (Ta)	-20°C / +45°C ¹
Safety marks	EN60598 / EN62031 / EN62471
EMC compliance	EN55015
Colour consistency (SDCM)	MacAdam step 3
Warranty	7 years * (within the European Union and the countries of the Free Trade Association for products delivered after 1 May 2015)
Energy class	These products contain a light source of energy efficiency class F (2700K/3000K) / E (4000K)

This luminaire contains built-in LED lamps. There are no exchangeable parts inside the luminaire. EU 874/2012



Only when the product is installed in a closed ceiling it may be exposed to water splashes, and only on its front side.

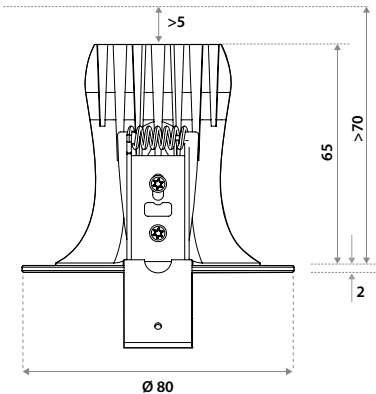
IP20

IP44

POINTER 68 FIX VARIATIONS

Pointer 68 fix LV	CRI93 220-240V	incl. power supply	page 3
Pointer 68 fix LVC	CRI93 700mA	to be connected to a central power supply	page 4
Pointer 68 fix LV	CRI82 220-240V	incl. power supply	page 5
Pointer 68 fix LVC	CRI82 700mA	to be connected to a central power supply	page 6

DIMENSIONS



CUT-OUT



Using **WS springs**: Ø 68-75 mm.
Thickness ceiling 1-30 mm
& recess depth 70 mm.

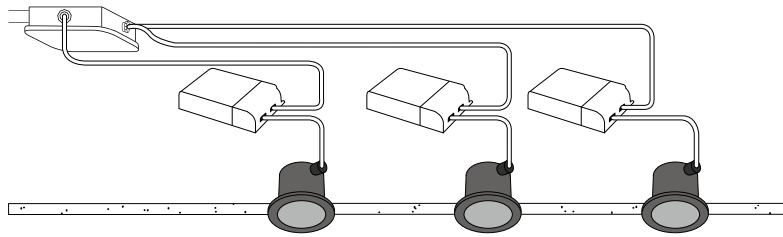
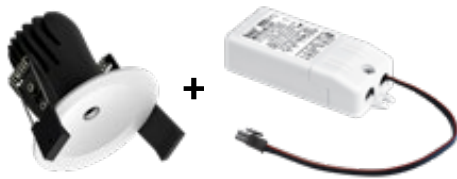


Using **CS springs**. Ø 68-75 mm.
Thickness ceiling 5-70 mm
& recess depth 70 mm.

POINTER 68 FIX (dimmable - incl. individual power supply)

CRI93 220-240V

Downlight incl. PSU



ITEM SPECIFICATIONS (PART A)

Description	Item code WS	Item code CS	Input	W	Lm	Lm/W	CRI (typ.)	UGR	Pf	Ripple	Inrush current	B-16A Fuse
Pointer 68 fix LV 35° 325Lm 2700K CRI93 Triac dim	OP3X03XXWU13	OP3X03XXLN13	220-240V	9,4	325	35	93	5.7	0.96	<20%	2A 50µS	50 pcs
Pointer 68 fix LV 35° 350Lm 3000K CRI93 Triac dim	OP3X03XXWV13	OP3X03XXLP13	220-240V	9,4	350	37	93	5.9	0.96	<20%	2A 50µS	50 pcs
Pointer 68 fix LV 35° 375Lm 4000K CRI93 Triac dim	OP3X03XXWW13	OP3X03XXLQ13	220-240V	9,4	375	40	93	6.2	0.96	<20%	2A 50µS	50 pcs
Pointer 68 fix LV 60° 475Lm 2700K CRI93 Triac dim	OP3X03XXWX13	OP3X03XXLR13	220-240V	9,4	475	51	93	16.9	0.96	<20%	2A 50µS	50 pcs
Pointer 68 fix LV 60° 525Lm 3000K CRI93 Triac dim	OP3X03XXWY13	OP3X03XXLS13	220-240V	9,4	525	56	93	17.3	0.96	<20%	2A 50µS	50 pcs
Pointer 68 fix LV 60° 575Lm 4000K CRI93 Triac dim	OP3X03XXWZ13	OP3X03XXLT13	220-240V	9,4	575	61	93	17.6	0.96	<20%	2A 50µS	50 pcs
Pointer 68 fix LV 35° 325Lm 2700K CRI93 1-10V & Push	OP3X03XXXU13	OP3X03XXYA13	220-240V	9,4	325	35	93	5.7	0.95	<3%	5A 50µS	50 pcs
Pointer 68 fix LV 35° 350Lm 3000K CRI93 1-10V & Push	OP3X03XXXV13	OP3X03XXYB13	220-240V	9,4	350	37	93	5.9	0.95	<3%	5A 50µS	50 pcs
Pointer 68 fix LV 35° 375Lm 4000K CRI93 1-10V & Push	OP3X03XXXW13	OP3X03XXYC13	220-240V	9,4	375	40	93	6.2	0.95	<3%	5A 50µS	50 pcs
Pointer 68 fix LV 60° 475Lm 2700K CRI93 1-10V & Push	OP3X03XXX13	OP3X03XXYD13	220-240V	9,4	475	51	93	16.9	0.95	<3%	5A 50µS	50 pcs
Pointer 68 fix LV 60° 525Lm 3000K CRI93 1-10V & Push	OP3X03XXX213	OP3X03XXYE13	220-240V	9,4	525	56	93	17.3	0.95	<3%	5A 50µS	50 pcs
Pointer 68 fix LV 60° 575Lm 4000K CRI93 1-10V & Push	OP3X03XXX313	OP3X03XXYF13	220-240V	9,4	575	61	93	17.6	0.95	<3%	5A 50µS	50 pcs
Pointer 68 fix LV 35° 325Lm 2700K CRI93 Dali	OP3X03XXW013	OP3X03XXL013	220-240V	9,4	325	35	93	5.7	0.95	<3%	5A 50µS	50 pcs
Pointer 68 fix LV 35° 350Lm 3000K CRI93 Dali	OP3X03XXW113	OP3X03XXL113	220-240V	9,4	350	37	93	5.9	0.95	<3%	5A 50µS	50 pcs
Pointer 68 fix LV 35° 375Lm 4000K CRI93 Dali	OP3X03XXW213	OP3X03XXL213	220-240V	9,4	375	40	93	6.2	0.95	<3%	5A 50µS	50 pcs
Pointer 68 fix LV 60° 475Lm 2700K CRI93 Dali	OP3X03XXW313	OP3X03XXL313	220-240V	9,4	475	51	93	16.9	0.95	<3%	5A 50µS	50 pcs
Pointer 68 fix LV 60° 525Lm 3000K CRI93 Dali	OP3X03XXW413	OP3X03XXL413	220-240V	9,4	525	56	93	17.3	0.95	<3%	5A 50µS	50 pcs
Pointer 68 fix LV 60° 575Lm 4000K CRI93 Dali	OP3X03XXW513	OP3X03XXL513	220-240V	9,4	575	61	93	17.6	0.95	<3%	5A 50µS	50 pcs

ITEM SPECIFICATIONS (PART B)

Description	Safety class	Energy class	Weight	Dimensions single carton	Quantity per carton	Expected Lifetime			Reported Lifetime*		
						L70B10	L80B10	L90B10	L70B10	L80B10	L90B10
Pointer 68 fix LV 2700K CRI93	II	F	200 gr	105x105x61 mm	42 pcs	177.000 hrs	113.000 hrs	51.000 hrs	>102.000 hrs	>102.000 hrs	51.000 hrs
Pointer 68 fix LV 3000K CRI93	II	F	200 gr	105x105x61 mm	42 pcs	177.000 hrs	113.000 hrs	51.000 hrs	>102.000 hrs	>102.000 hrs	51.000 hrs
Pointer 68 fix LV 4000K CRI93	II	E	200 gr	105x105x61 mm	42 pcs	177.000 hrs	113.000 hrs	51.000 hrs	>102.000 hrs	>102.000 hrs	51.000 hrs

All values are measured at 230V (+/- 7%). *Based on 17.000hrs of LM80 testing at 700mA and a Tc85 °C.

INCL. PSU

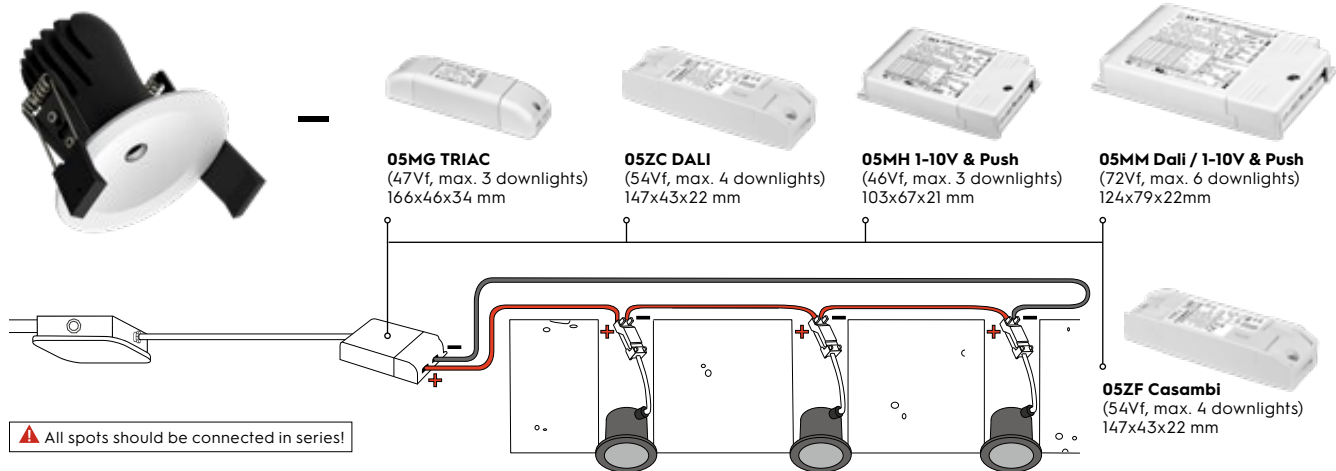
PSU TC1 127046 Triac dim	102x38x21 mm
PSU TC1 125400 1-10V & Push	111x52x22 mm
PSU TC1 142014 Dali	147x44x22 mm



Cable
150 mm

POINTER 68 FIX (dimmable - excl. central power supply)

CRI93 - 700 mA



ITEM SPECIFICATIONS (PART A)

Description	Item code WS	Item code CS	Input	Vf	W	Lm	Lm/W	CRI (typ.)	UGR	Pf	Ripple	Inrush current	B-16A Fuse
Pointer 68 fix LVC 700mA 35° 325 Lm 2700K CRI93	OP3X03XXWU11	OP3X03XXLN11	700mA	11.7	8.2	325	40	93	5.7	x	x	x	x
Pointer 68 fix LVC 700mA 35° 350 Lm 3000K CRI93	OP3X03XXWV11	OP3X03XXLP11	700mA	11.7	8.2	350	43	93	5.9	x	x	x	x
Pointer 68 fix LVC 700mA 35° 375 Lm 4000K CRI93	OP3X03XXWW11	OP3X03XXLQ11	700mA	11.7	8.2	375	46	93	6.2	x	x	x	x
Pointer 68 fix LVC 700mA 60° 475 Lm 2700K CRI93	OP3X03XXWX11	OP3X03XXLR11	700mA	11.7	8.2	475	58	93	16.9	x	x	x	x
Pointer 68 fix LVC 700mA 60° 525 Lm 3000K CRI93	OP3X03XXWY11	OP3X03XXLS11	700mA	11.7	8.2	525	64	93	17.3	x	x	x	x
Pointer 68 fix LVC 700mA 60° 575 Lm 4000K CRI93	OP3X03XXWZ11	OP3X03XXLT11	700mA	11.7	8.2	575	70	93	17.6	x	x	x	x

ITEM SPECIFICATIONS (PART B)

Description	Safety class	Energy class	Weight	Dimensions single carton	Quantity per carton	Expected Lifetime			Reported Lifetime*		
						L70B10	L80B10	L90B10	L70B10	L80B10	L90B10
Pointer 68 fix LVC 700mA 2700K CRI93	III	F	254 gr	105x105x61 mm	42 pcs	177.000 hrs	113.000 hrs	51.000 hrs	>102.000 hrs	>102.000 hrs	51.000 hrs
Pointer 68 fix LVC 700mA 3000K CRI93	III	F	254 gr	105x105x61 mm	42 pcs	177.000 hrs	113.000 hrs	51.000 hrs	>102.000 hrs	>102.000 hrs	51.000 hrs
Pointer 68 fix LVC 700mA 4000K CRI93	III	E	254 gr	105x105x61 mm	42 pcs	177.000 hrs	113.000 hrs	51.000 hrs	>102.000 hrs	>102.000 hrs	51.000 hrs

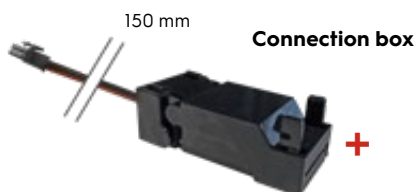
ITEM SPECIFICATIONS (PSU)

Description	Item code	Input	Watt	Current	Efficiency	Pf	Ripple	Weight	Inrush current	B-16A Fuse
PSU 32W 700mA Triac	05MG03MLMF00	220-240V	32W (46Vf)	700mA	85%	0.97	<3%	138 gr	5A 50µs	50 pcs
PSU 38W 700mA Dali	05ZC03MLMF00	220-240V	38W (54Vf)	700mA	89%	0.95	<3%	139 gr	5A 50µs	50 pcs
PSU 32W 700mA 1-10V & Push	05MH03MLMF00	220-240V	32W (46Vf)	700mA	88%	0.95	<3%	138 gr	5A 50µs	50 pcs
PSU 36W 700mA Casambi	05ZF03MLMF00	220-240V	36W (51Vf)	700mA	89%	0.95	<3%	139 gr	5A 50µs	50 pcs
PSU 50W 700mA Dali / 1-10V & Push	05MM03MLMF00	220-240V	50W (72Vf)	700mA	89%	0.95	<3%	218 gr	10A 200µs	30 pcs

All values are measured at 230V (+/- 7%). *Based on 17.000hrs of LM80 testing at 700mA and a Tc85 °C.

INCLUDING CONNECTION BOX

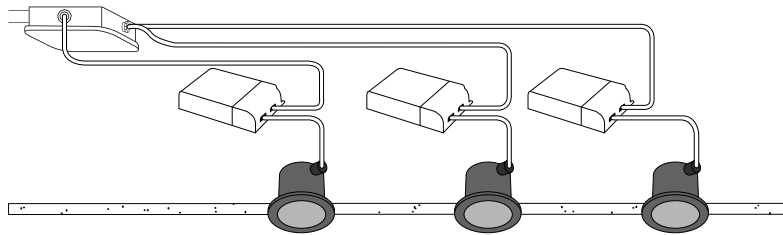
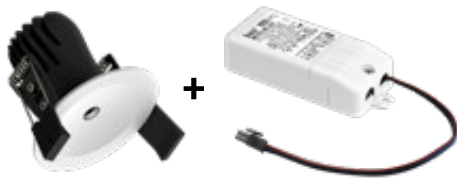
For installation to a central power supply.



POINTER 68 FIX (dimmable - incl. individual power supply)

CRI82 220-240V

Downlight incl. PSU



ITEM SPECIFICATIONS (PART A)

Description	Item code WS	Item code CS	Input	W	Lm	Lm/W	CRI (typ.)	UGR	Pf	Ripple	Inrush current	B-16A Fuse
Pointer 68 fix LV 35° 500Lm 2700K CRI82 Triac dim	OP2803XXWU13	OP2803XXLN13	220-240V	9,2	500	54	82	7.2	0.96	<20%	2A 50μS	50 pcs
Pointer 68 fix LV 35° 525Lm 3000K CRI82 Triac dim	OP2803XXWV13	OP2803XXLP13	220-240V	9,2	525	57	82	7.3	0.96	<20%	2A 50μS	50 pcs
Pointer 68 fix LV 35° 550Lm 4000K CRI82 Triac dim	OP2803XXWW13	OP2803XXLQ13	220-240V	9,2	550	60	82	7.5	0.96	<20%	2A 50μS	50 pcs
Pointer 68 fix LV 60° 550Lm 2700K CRI82 Triac dim	OP2803XXWX13	OP2803XXLR13	220-240V	9,2	550	60	82	17.5	0.96	<20%	2A 50μS	50 pcs
Pointer 68 fix LV 60° 600Lm 3000K CRI82 Triac dim	OP2803XXWY13	OP2803XXLS13	220-240V	9,2	600	65	82	17.8	0.96	<20%	2A 50μS	50 pcs
Pointer 68 fix LV 60° 650Lm 4000K CRI82 Triac dim	OP2803XXWZ13	OP2803XXLT13	220-240V	9,2	650	71	82	18.0	0.96	<20%	2A 50μS	50 pcs
Pointer 68 fix LV 35° 500Lm 2700K CRI82 1-10V & Push	OP2803XXXU13	OP2803XXYA13	220-240V	9,2	500	54	82	7.2	0.95	<3%	5A 50μS	50 pcs
Pointer 68 fix LV 35° 525Lm 3000K CRI82 1-10V & Push	OP2803XXXV13	OP2803XXYB13	220-240V	9,2	525	57	82	7.3	0.95	<3%	5A 50μS	50 pcs
Pointer 68 fix LV 35° 550Lm 4000K CRI82 1-10V & Push	OP2803XXXW13	OP2803XXYC13	220-240V	9,2	550	60	82	7.5	0.95	<3%	5A 50μS	50 pcs
Pointer 68 fix LV 60° 550Lm 2700K CRI82 1-10V & Push	OP2803XXXX13	OP2803XXYD13	220-240V	9,2	550	60	82	17.5	0.95	<3%	5A 50μS	50 pcs
Pointer 68 fix LV 60° 600Lm 3000K CRI82 1-10V & Push	OP2803XXXY13	OP2803XXYE13	220-240V	9,2	600	65	82	17.8	0.95	<3%	5A 50μS	50 pcs
Pointer 68 fix LV 60° 650Lm 4000K CRI82 1-10V & Push	OP2803XXXZ13	OP2803XXYF13	220-240V	9,2	650	71	82	18.0	0.95	<3%	5A 50μS	50 pcs
Pointer 68 fix LV 35° 500Lm 2700K CRI82 Dali	OP2803XXW013	OP2803XXL013	220-240V	9,2	500	54	82	7.2	0.95	<3%	5A 50μS	50 pcs
Pointer 68 fix LV 35° 525Lm 3000K CRI82 Dali	OP2803XXW113	OP2803XXL113	220-240V	9,2	525	57	82	7.3	0.95	<3%	5A 50μS	50 pcs
Pointer 68 fix LV 35° 550Lm 4000K CRI82 Dali	OP2803XXW213	OP2803XXL213	220-240V	9,2	550	60	82	7.5	0.95	<3%	5A 50μS	50 pcs
Pointer 68 fix LV 60° 550Lm 2700K CRI82 Dali	OP2803XXW313	OP2803XXL313	220-240V	9,2	550	60	82	17.5	0.95	<3%	5A 50μS	50 pcs
Pointer 68 fix LV 60° 600Lm 3000K CRI82 Dali	OP2803XXW413	OP2803XXL413	220-240V	9,2	600	65	82	17.8	0.95	<3%	5A 50μS	50 pcs
Pointer 68 fix LV 60° 650Lm 4000K CRI82 Dali	OP2803XXW513	OP2803XXL513	220-240V	9,2	650	71	82	18.0	0.95	<3%	5A 50μS	50 pcs

ITEM SPECIFICATIONS (PART B)

Description	Safety class	Energy class	Weight	Dimensions single carton	Quantity per carton	Expected Lifetime B10 reported (25°C)		
						L70B10	L80B10	L90B10
Pointer 68 fix LV 2700K CRI82	II	F	304 gr	105x105x105 mm	42 pcs	>60.000 hrs	>60.000 hrs	>60.000 hrs
Pointer 68 fix LV 3000K CRI82	II	F	304 gr	105x105x105 mm	42 pcs	>60.000 hrs	>60.000 hrs	>60.000 hrs
Pointer 68 fix LV 4000K CRI82	II	E	304 gr	105x105x105 mm	42 pcs	>60.000 hrs	>60.000 hrs	>60.000 hrs

All values are measured at 230V (+/- 7%)

INCL. PSU

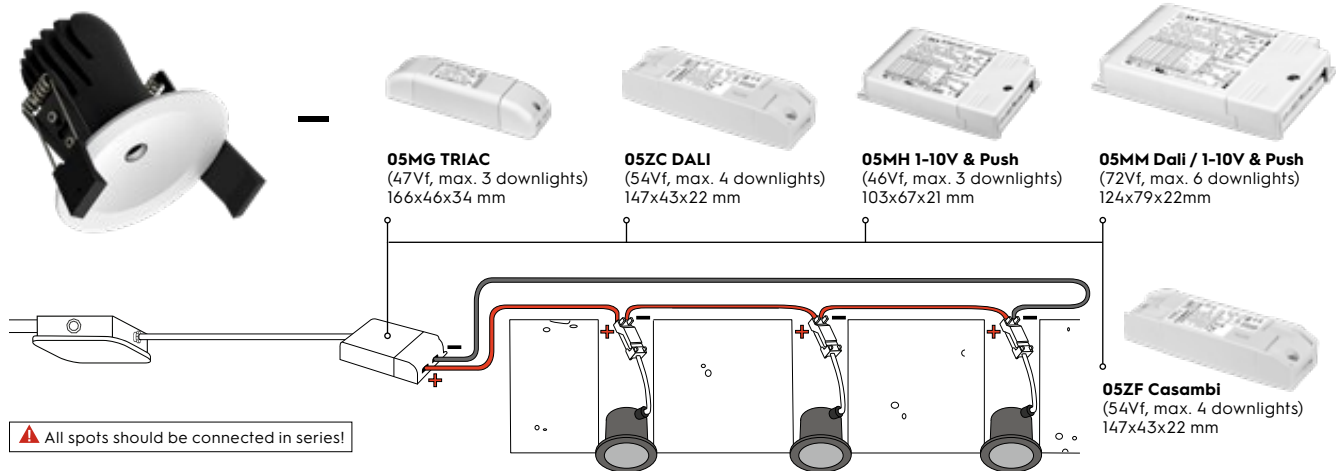
PSU TC1 127046 Triac dim	102x38x21 mm
PSU TC1 125400 1-10V & Push	111x52x22 mm
PSU TC1 142014 Dali	147x44x22 mm



Cable
150 mm

POINTER 68 FIX (dimmable - excl. central power supply)

CRI82 - 700 mA



ITEM SPECIFICATIONS (PART A)

Description	Item code WS	Item code CS	Input	Vf	W	Lm	Lm/W	CRI (typ.)	UGR	Pf	Ripple	Inrush current	B-16A Fuse
Pointer 68 fix LVC 700mA 35° 500 Lm 2700K CRI82	OP2803XXWU11	OP2803XXLN11	700mA	11,5	8,0	500	63	82	7.2	x	x	x	x
Pointer 68 fix LVC 700mA 35° 525 Lm 3000K CRI82	OP2803XXWV11	OP2803XXLP11	700mA	11,5	8,0	525	66	82	7.3	x	x	x	x
Pointer 68 fix LVC 700mA 35° 550 Lm 4000K CRI82	OP2803XXWW11	OP2803XXLQ11	700mA	11,5	8,0	550	69	82	7.5	x	x	x	x
Pointer 68 fix LVC 700mA 60° 550 Lm 2700K CRI82	OP2803XXWX11	OP2803XXLR11	700mA	11,5	8,0	550	69	82	17.5	x	x	x	x
Pointer 68 fix LVC 700mA 60° 600 Lm 3000K CRI82	OP2803XXWY11	OP2803XXLS11	700mA	11,5	8,0	600	75	82	17.8	x	x	x	x
Pointer 68 fix LVC 700mA 60° 650 Lm 4000K CRI82	OP2803XXWZ11	OP2803XXLT11	700mA	11,5	8,0	650	81	82	18.0	x	x	x	x

ITEM SPECIFICATIONS (PART B)

Description	Safety class	Energy class	Weight	Dimensions single carton	Quantity per carton	Expected Lifetime B10 reported (25°C)		
						L70B10	L80B10	L90B10
Pointer 68 fix LVC 700mA 2700K CRI82	III	F	254 gr	105x105x105 mm	42 pcs	>60.000 hrs	>60.000 hrs	>60.000 hrs
Pointer 68 fix LVC 700mA 3000K CRI82	III	F	254 gr	105x105x105 mm	42 pcs	>60.000 hrs	>60.000 hrs	>60.000 hrs
Pointer 68 fix LVC 700mA 4000K CRI82	III	E	254 gr	105x105x105 mm	42 pcs	>60.000 hrs	>60.000 hrs	>60.000 hrs

ITEM SPECIFICATIONS (PSU)

Description	Item code	Input	Watt	Current	Efficiency	Pf	Ripple	Weight	Inrush current	B-16A Fuse
PSU 32W 700mA Triac	05MG03MLMF00	220-240V	32W (46Vf)	700mA	85%	0.97	<3%	138 gr	5A 50µS	50 pcs
PSU 38W 700mA Dali	05ZC03MLMF00	220-240V	38W (54Vf)	700mA	89%	0.95	<3%	139 gr	5A 50µS	50 pcs
PSU 32W 700mA 1-10V & Push	05MH03MLMF00	220-240V	32W (46Vf)	700mA	88%	0.95	<3%	138 gr	5A 50µS	50 pcs
PSU 36W 700mA Casambi	05ZF03MLMF00	220-240V	36W (51Vf)	700mA	89%	0.95	<3%	139 gr	5A 50µS	50 pcs
PSU 50W 700mA Dali / 1-10V & Push	05MM03MLMF00	220-240V	50W (72Vf)	700mA	89%	0.95	<3%	218 gr	10A 200µS	30 pcs

All values are measured at 230V (+/- 7%)

INCLUDING CONNECTION BOX

For installation to a central power supply.

